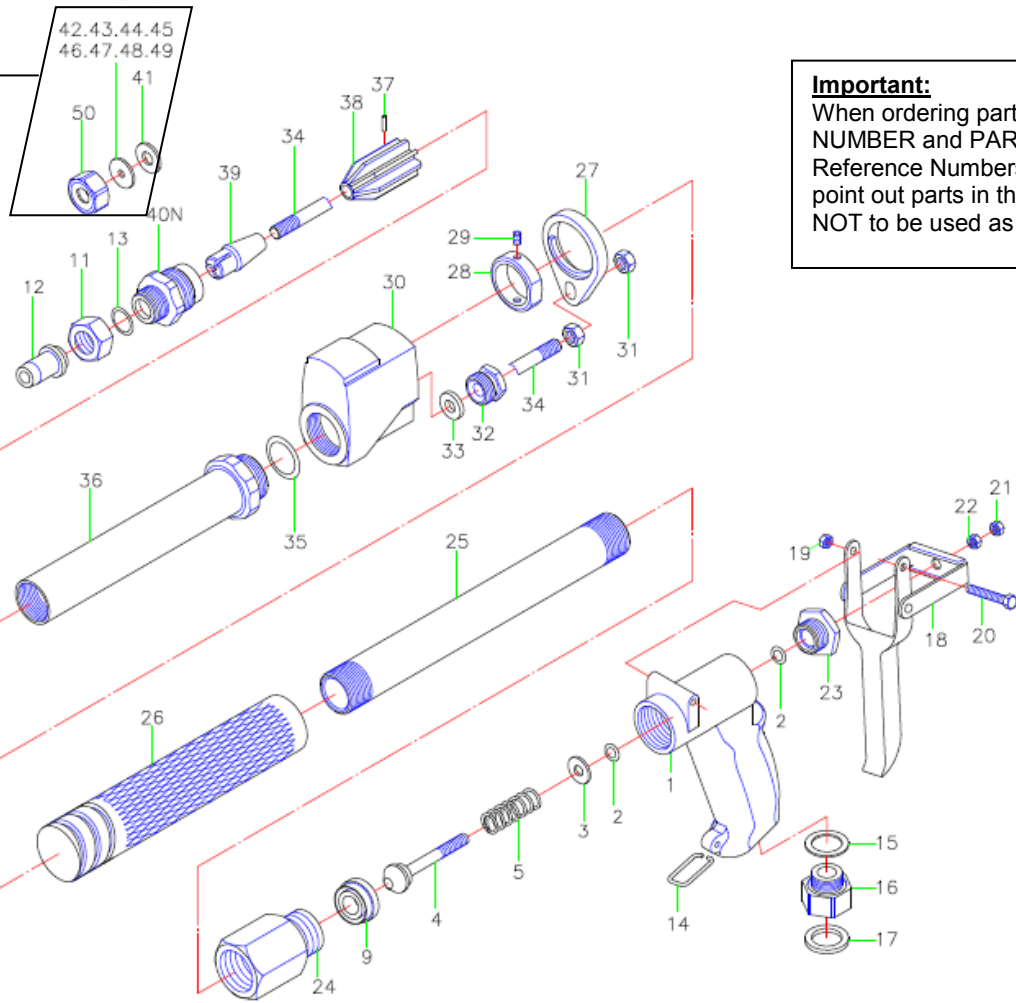


Optional
Ref # 41-50



Important:
When ordering parts, give PART NUMBER and PART DESCRIPTION. Reference Numbers are used only to point out parts in the drawing and are NOT to be used as ordering numbers

Ref. No.	Part No.	Item Description
1	12-850-01	Grip
2	12-850-02	O-Ring ▲■●
3	12-850-03	Washer, Stainless Steel
4	12-850-04	Valve, Stainless Steel ●
5	12-850-05	Valve Spring
9	12-850-09	Valve Seat ■●
11	12-854-11	Nozzle Cap *Standard*
12	12-853-122XL	Nozzle, 6.0—11.0 GPM—Installed
	12-853-123XL	Nozzle, 8.0—13.5 GPM
	12-853-125XL	Nozzle, 9.0—24.0 GPM
13	12-853-13	O-Ring ▲■●
14	12-850-14	Trigger Stopper Clip
15	12-850-15	Gasket 25 x 18 x 2.0
16	12-850-16	¾" Garden Hose Coupler
17	12-850-17	Gasket 27 x 18 x 2.0
18	12-850-18	Trigger, Stainless Steel
19	12-850-19N	Lock-Nut (M6 x 1.0)
20	12-850-20	Bolt (M6 x 1.0)
21/22	12-850-19	Nut (M6 x 1.0)
23	12-850-23	Gland
24	12-854-24	Adapter, Brass

Ref. No.	Part No.	Item Description
25	12-854-25	Gun Barrel
26	12-854-26	Cam Barrel
27	12-854-27	Cam Nut
28	12-854-28	Collar
29	12-854-29	Set Screw
30	12-854-30	Body
31	12-854-31	Hex Nut
32	12-854-32	Packing Nut
33	12-854-33	Packing
34	12-854-34	Valve Stem
35	12-854-35	O-Ring
36	12-854-36	Outer Tube
37	12-854-37	Roll Pin
38	12-854-38	Stream Straightener
39	12-854-39	Whirler
40N	12-854-40	Valve Body

Optional *Not Included

41	12-854-41	Gasket
42-49	12-854-**	Disc * Specify*
50	12-854-50	Nozzle Cap, Disc

Optional *Ref # 42-49

Part #	Description/Hole Diameter	GPM @ 200PSI	GPM @ 300PSI	GPM @ 400PSI	GPM @ 500PSI	GPM @ 600PSI	GPM @ 800PSI
12-854-42	# 5 Disc/ .078"	1.7	2.0	2.4	2.7	2.9	3.4
12-854-43	# 6 Disc/ .093"	2.4	3.0	3.4	3.8	4.2	4.9
12-854-44	# 7 Disc/ .109"	3.3	4.0	4.6	5.0	5.7	6.7
12-854-45	# 8 Disc/ .125"	4.2	5.2	6.0	6.6	7.4	8.5
12-854-46	# 10 Disc/ .156"	6.5	8.1	9.2	10.3	11.4	13.0
12-854-47	# 12 Disc/ .187"	9.8	12.0	13.9	15.5	17.0	19.9
12-854-48	# 14 Disc/ .218"	14.9	18.2	21.1	23.5	25.8	29.6
12-854-49	# 16 Disc/ .250"	18.8	23.0	26.5	29.6	32.5	37.1

Optional *Ref # 12

Part No.	Description
12-853-12S	Nozzle, 0.24- 0.50 GPM
12-853-12M	Nozzle, 0.50—2.0 GPM
12-853-12L	Nozzle, 2.0– 5.0 GPM
12-853-12XL	Nozzle, 3.0—7.0 GPM
12-853-122XL	Nozzle, 6.0—11.0 GPM * Installed on Gun
12-853-123XL	Nozzle, 8.0—13.5 GPM
12-853-125XL	Nozzle, 9.0—24.0 GPM

Repair Kits

Part No.	Description
13-853-50 ▲	Repair Kit #1 Includes: Ref # 2 Gasket, Ref # 13 O-Ring and Ref # 6 Gasket
13-853-60 ■	Repair Kit #2 Includes: Ref # 2 Gasket, Ref # 13 O-Ring, Ref # 6 Gasket, and Ref # 9 Valve Seat
13-853-75 ●	Rebuild Kit Includes: Ref # 2 Gasket, Ref # 13 O-Ring, Ref # 6 Gasket, Ref # 9 Valve Seat, Ref # 7 Stainless Steel Whirler and Ref # 4 Stainless Steel Valve
13-854-25	Mighty Mag Original Disc Kit. Includes: 12-854-41 Gasket, 12-854-43 #6 Disc, 12-854-44 #7 Disc, 12-854-46 # 10 Disc and 12-854-48 # 14 Disc