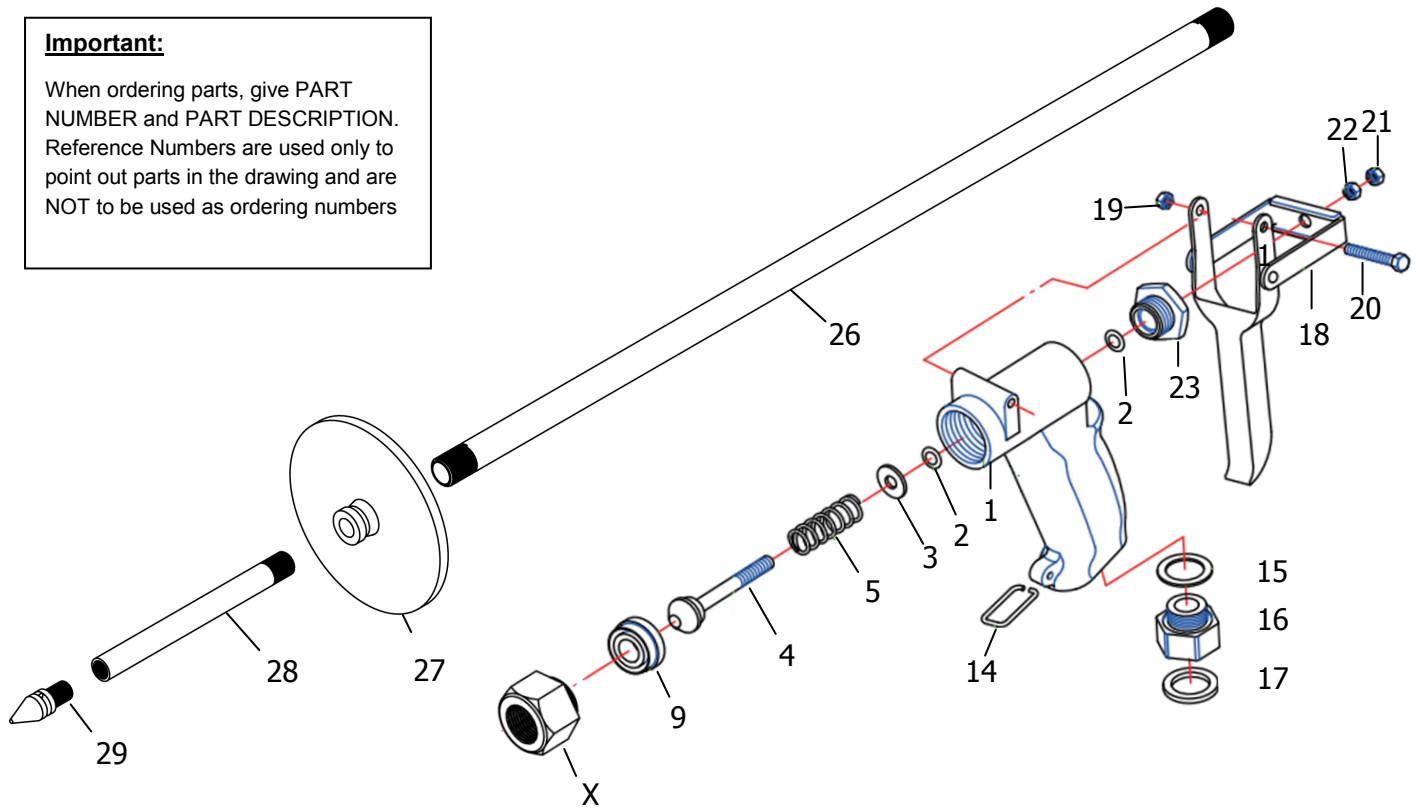


Important:

When ordering parts, give PART NUMBER and PART DESCRIPTION. Reference Numbers are used only to point out parts in the drawing and are NOT to be used as ordering numbers



Ref #	Item ID	Description
1	12-850-01	Mag-1 Series Grip #1
2	12-850-02	Mag-1 O-Ring #2
3	12-850-03	Mag-1 SS Washer #3
4	12-850-04	Mag-1 SS Valve Stem #4
5	12-850-05	Mag-1 Valve Spring #5
6	12-853-06	Mag-1 O-Ring #6
9	12-850-09	Mag-1 Valve Seat #9
14	12-850-14	Mag-1 Trigger Clip #14
15	12-850-15	Mag-1 Grip Gasket #15
16	12-850-16	Mag-1 3/4 Garden Hose Adpt #16
17	12-850-17	Mag-1 Adpt Gasket #17
18	12-850-18	Mag-1 SS Trigger #18
19	12-850-19N	Mag-1 Lock Nut #19
20	12-850-20	Mag-1 Bolt #20
21	12-850-19	Mag-1 Nut #21 & #22
22	12-850-19	Mag-1 Nut #21 & #22
23	12-850-23	Mag-1 Gland #23

Ref #	Item ID	Description
26	12-856-05	Root Feeder 30" Extension #26
27	12-856-10	Root Feeder Kick Plate Assembly #27
28	12-856-02	Root Feeder Probe #28
29	12-856-07	Root Feeder Tip #29
X	N/A	Only Sold with Grip Assembly
	13-856-91	Root Feeder Grip Assembly (Ref # 1-23)
	13-856-92	Root Feeder Ground Rod Assembly (Ref # 26, 27, 28 & 29)

Featured Kits	
13-853-60	Mag-1 Repair Kit. Includes: 12-850-02 Gasket, 12-853-13 O-Ring, and 12-850-06 Gasket, 12-850-09 Valve Seat.
13-853-75	Mag-1 Rebuild Kit. Includes: 12-850-02 Gasket, 12-853-13 O-Ring, and 12-850-06 Gasket, 12-850-09 Valve Seat, 12-853-07 Whirler and 12-853-04 Stainless Steel Valve.