

# **P550 PUMP**

## **Operations and Parts**

### **Manual**

GNC Industries, Inc.,

**1-870-248-9901**

Fax: 870-248-9905 Email: [sales@gnci.org](mailto:sales@gnci.org)

Website: [www.gncindustries.com](http://www.gncindustries.com)

# WARRANTY

GNC Industries, Inc. (GNC), P-Series Pumps are warranted for 1 year from date of purchase or 2 year from manufactured date when properly installed, maintained and operated. In no event will GNC have a warranty obligation for normal wear and tear, or for products that have, at GNC's determination, been subject to accident, abuse, misapplication, improper installation or improper maintenance. Common examples of normal wear and tear would include, but not limited to: packings, valves and belts. GNC limited warranty covers unmistakable defect in material or work-manship. In this event, GNC will repair or replace, at GNC's option, any part or assembly. Labor is not covered by warranty.

GNC Industries, Inc. makes no warranties, express or implied, other than those included in this warranty statement, and we disclaim any implied warrant of merchantability or fitness for any particular purpose. GNC will not be liable for any consequential, incidental, or indirect damages from any cause whatsoever.

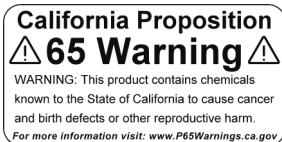
GNC Industries, Inc. assumes no responsibility for accidents or injuries resulting from maintenance or adjustment of product while product is in operation.

GNC Industries, Inc. has no control over the operational techniques or chemicals used by consumer. Thus GNC Industries, Inc. assumes no liability for the consequences of the use or misuse of any equipment by the purchaser, their employees or others.

Failure to use properly sized pulleys or operate within recommended speed and pressure will void warranty. Failure to maintain proper oil levels and maintenance will void warranty. Modification of equipment will void warranty. Components not manufactured by GNC Industries, Inc will be subject to the original manufacturers' warranties.

GNC Industries, Inc. reserves the right to modify or alter materials, dimensions, design, and construction when necessary to improve the performance of the pump and/or accessories, or to meet delivery requirements. GNC is not obligated to provide that change on equipment sold and/or shipped prior to the product change.



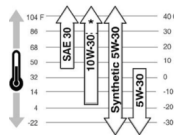


- **Warning:**

1. Never point the spray gun at people or animals.
2. The pump will produce high temperatures when operating.
3. Keep hands and clothing clear of the belts and pulleys when operating the pump.

- **Before Use/Start Up:**

1. Check every fastener, including all hose clamps, to make sure that the sprayer and the engine are installed firmly to the frame.
2. Align the pump and engine pulleys in a straight line and tighten the belts appropriately.
3. Check engine (see engine manual) and pump oil (non-detergent). Fill as needed to recommended levels. DO NOT OVER FILL!
4. Check engine fuel. Fill as needed, with engine manufacture recommended fuel.
5. Attached the spray gun to the spray hose and tighten all clamps.
6. Set the pump pressure regulator to "Pressure Release" and make sure the pressure regulator knob is set to "Start".
7. Check the on/off switches of engine.
8. Start engine.
9. Set the pump pressure regulator to "Spraying".
10. Adjust the pressure by turning the adjustable pressure regulator valve clockwise.



- **During Use:**

1. Make sure the pump has sufficient liquid supply to allow the pump to reach its working pressure.
2. To prolong the life of the pump, always operate the machine within its specified pressure limits. Adjust the pressure by turning the adjustable regulator knob clockwise.
3. In order to avoid any damage to the packing and the pump, shut off the engine or motor when temporarily stopping the unit for more than 5 minutes.
4. Avoid running the pump without liquid.

- **After Each Use:**

1. Before adding chemical, set the pressure regulator switch to "Pressure Release", and run the pump with clean water to prevent build-up.
2. Set the pressure regulating knob to "START" when the pump is not in use.

- **Maintenance:**

1. Change the oil in the pump after the first 10-15 hours of use. After this, change the oil in the pump after every 70 hours of use. NOTE: Always make sure the oil is clean and visible thru the oil sight gauge Ref#11A before operating.
2. Change or replace components, based on the symptoms as listed in the trouble shooting section.

- **How to Change Oil:**

1. Remove Ref # 12A Drain Plug. Allow the oil and any sludge to drain form the crankcase into an EPA approved collection device.
2. Replace Ref # 12A Drain Plug once the crankcase has been drained.

3. Remove Ref # 7A Oil Fill Cap and fill crankcase with NON Detergent SAE30 oil until the oil level is covering 2/3 of Ref # 11A Oil Window.
4. Once filled, replaced Ref # 7A Oil Fill Cap.



## **Specifications**

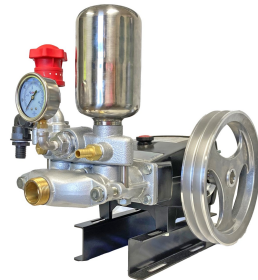
Maximum Flow.....	15 GPM
Maximum Pressure.....	600 PSI
Maximum RPM.....	800 RPM
Maximum Temperature.....	140 F
Inlet Port.....	1¼"
Outlet Port (QTY 2).....	½"
Outlet Port (Regulator Return Line).....	¾"
Shaft Size.....	24mm
Dimensions:	
Standard Mounted:.....	18"T x 13"W x 18"L

Weight..... 60 Lbs

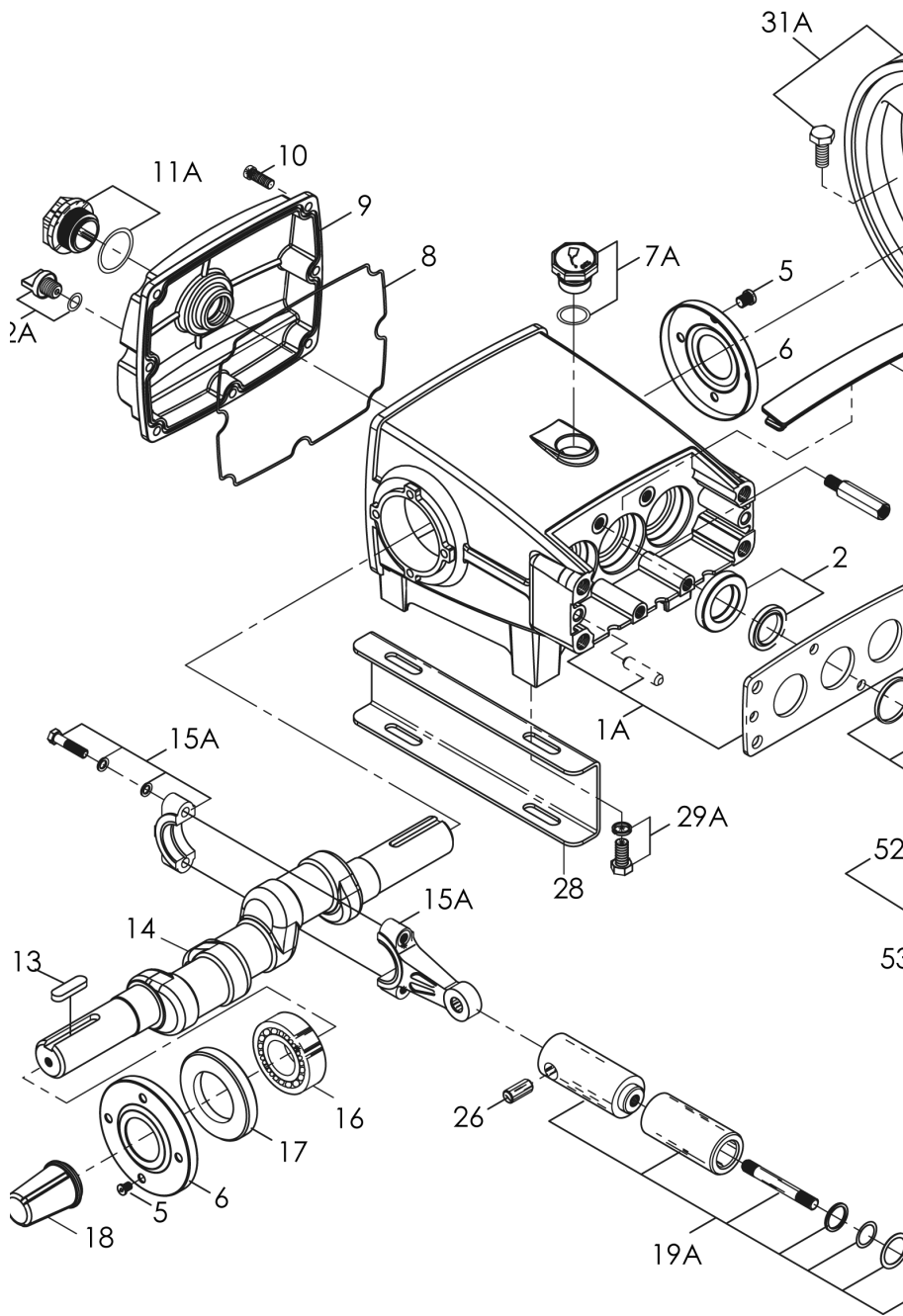


### **Pump Oil**

Non-  
Detergent  
SAE30  
Weight



**NOTE: Not following proper procedures as listed in the detailed product manual may void all warranties**

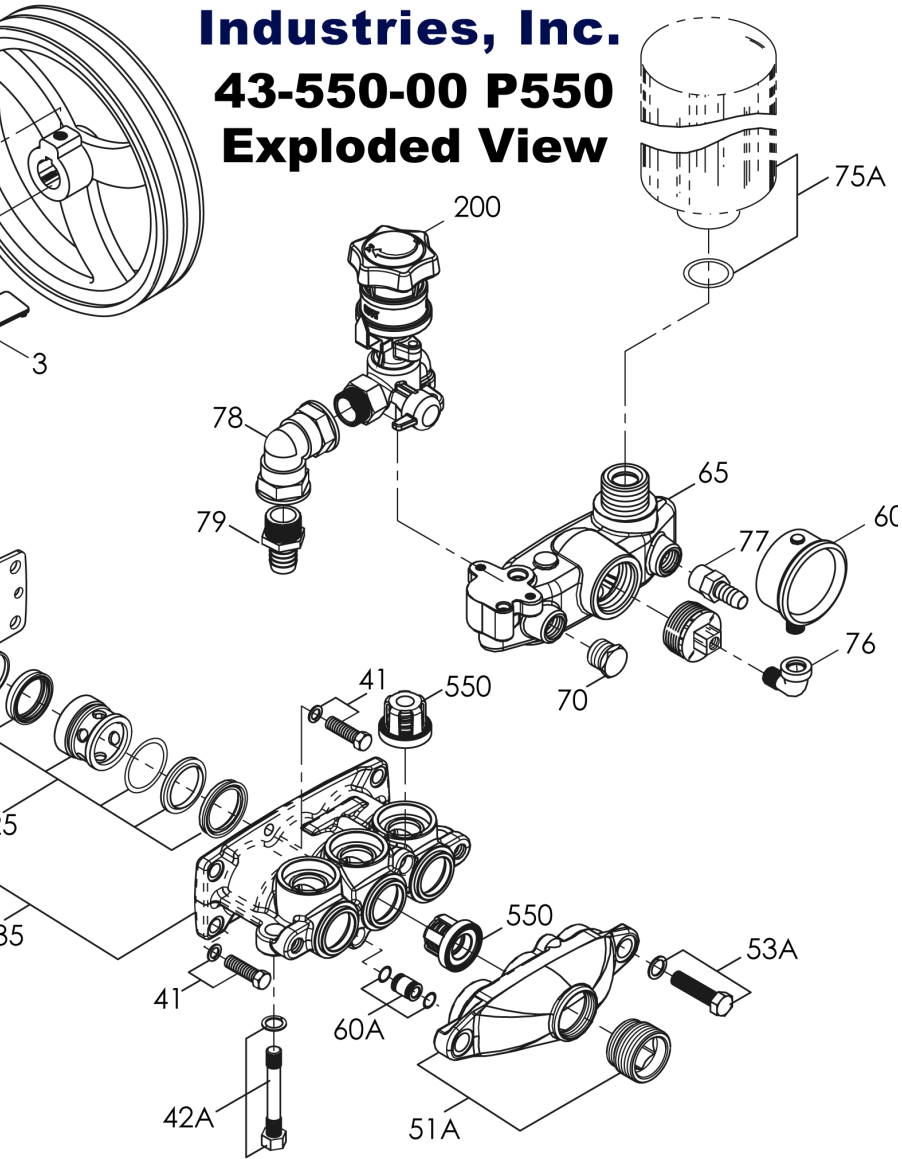




**Industries, Inc.**

**43-550-00 P550**

**Exploded View**



<b>REF #</b>	<b>PART #</b>	<b>DESCRIPTION</b>
1A	42-550-01	Crankcase, Set Pins, & Plate
2A	42-550-02	Piston Oil Seal
3	42-550-03	Dust Cover
5	42-530-05	Screw
6	42-530-06	Crankshaft Oil Seal Cover
7A	42-550-07	Oil Inlet Cover Assy.
8	42-550-08	Rear Cover Packing
9	42-550-09	Crankshaft Rear Cover
10	42.530.10	Screw
11A	42-530-11	Oil Window Assy.
12A	42-530-12	Drainage Screw Assy.
13	42-530-13	Crankshaft Key
14	42-550-14	Crankshaft
15A	42-550-15	Connecting Rod Assy.
16	42-550-16	Bearing
17	42-550-17	Crankshaft Oil Seal
18	42-530-18	Crankshaft Oil Seal Cover
19A	42-550-19	Piston Assy.
26	42-550-26	Piston Pin
28	42-530-28	Crankcase Stand (Short)
29A	42-530-29	Bolt & Washer
31A	42-550-31	Pulley with Set Bolt
41	42-550-41	Bolt & Washer
42A	42-550-42	Double-End Screw, Nut & Lock Washer
51A	42-550-51	Suction Chamber w/Connector
53A	42-550-53	Bolt & Washer
60A	42-530-60	Connecting Hose w/O-Ring
65	42-550-65	Outlet Chamber
70	FT-F12B	½" Brass Plug



REF #	PART #	DESCRIPTION
75	42-550-75	Air Chamber Surge Tank with O-Ring
74	42-530-74	Air Chamber—O-Ring
75	42-530-75	Air Chamber / Surge Tank
76	FT-GAL-SE14	¼" Street Elbow
77	FT-TW12B	½" MNPT x ½" HB Swivel
78	FT-3LL34	¾"x¾" FNPT Fitting
79	FT-3A34	¾" MNPT x ¾" HB Poly Fitting
200	43-530-200	Complete Regulator
535	43-550-535	Cylinder Head w/ Preinstalled Packing
550	43-550-550	Replacement Valve Kit (6pcs)
NA	43-550-580	Rebuild Kit (ref#s 550 & 525)
NA	43-550-600	Master Rebuild Kit (ref#s 550 & 535)
600	42-950-600	0-600psi Pressure Gauge

**For more information and videos visit our support page:**

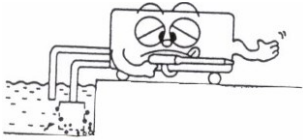
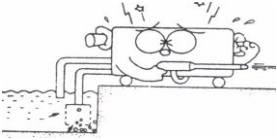
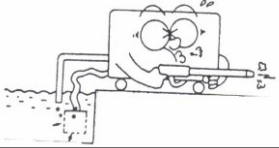
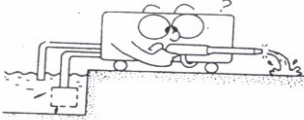
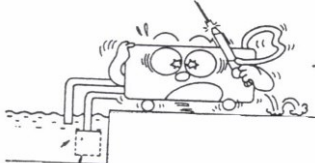
**<https://gncindustries.com/support/>**



**1-870-248-9901**

Fax: 870-248-9905

Email: [sales@gnci.org](mailto:sales@gnci.org)

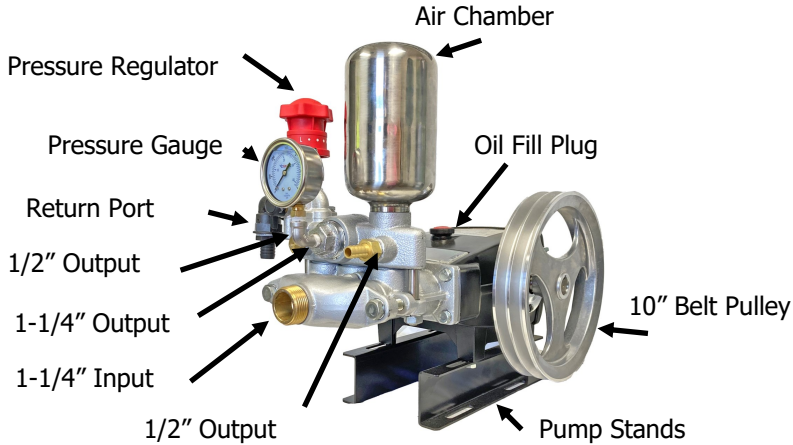
<p>Low or Lost Pressure</p>	<p>Abnormal Suction</p>
	
<p>Ref: 1,2, 3, 4, 5, 6, 10, 11, 12, 13, 14, 15, 16</p>	<p>Ref: 2, 3, 6, 7, 8, 11, 15,16</p>
<p>No Liquid at Spray Gun</p>	<p>Abnormal Pump Noise</p>
	
<p>Ref: 2, 11, 14, 15, 16</p>	<p>Ref: 2, 3, 7, 8, 11, 15, 16</p>
<p>Abnormal Vibration</p>	
	
<p>Ref: 9</p>	

## TROUBLESHOOTING REFERENCE NUMBERS

1. Spray gun tip too large or worn
2. Suction filter clogged
3. Loose suction line connection
4. Malfunctioning pressure gauge
5. Malfunctioning pressure regulator
6. Worn pump suction and discharge valves
7. Over speeding the pump
8. Suction line too small
9. Pulsation dampening chamber full of water
10. Worn pump valve chamber
11. Foreign object in suction line
12. Plunger packing worn
13. Pump drive belts loose
14. Pressure regulator by-pass valve open
15. Suction line valve closed
16. Drive pulley spinning on pump or engine shaft. Replace drive key.



# Quick Reference



## Initial Set-Up

- Check pump and engine oil levels
- Check engine gas level. Add fuel as needed
- Fill Tank—**DO NOT RUN UNIT DRY**



Initial Set-Up  
Video



## Operations

- Set engine switch to "**ON**"
- Set engine gas shut-off to "**OPEN**" position
- Set engine choke to "**OPEN**"
- Set engine throttle to "**FULL**" (Rabbit)
- Set pump regulator **red knob** to "**START**"
- Set pump regulator **black knob** to "**PRESSURE RELEASE**"
- Pull engine recoil cord to start engine
- Set engine choke to "**CLOSE**"
- Set regulator valve - To "**SPRAY**"
- Adjust regulator knob to desired PSI
- Start Spraying. See calibration in Owners Manual



Operation  
Video

Read complete manual for full details.

**www.gncindustries.com**